



MINISTERUL DEZVOLTĂRII REGIONALE
ȘI ADMINISTRAȚIEI PUBLICE



Discover Bucharest-Ilfov Region for new investment partnerships

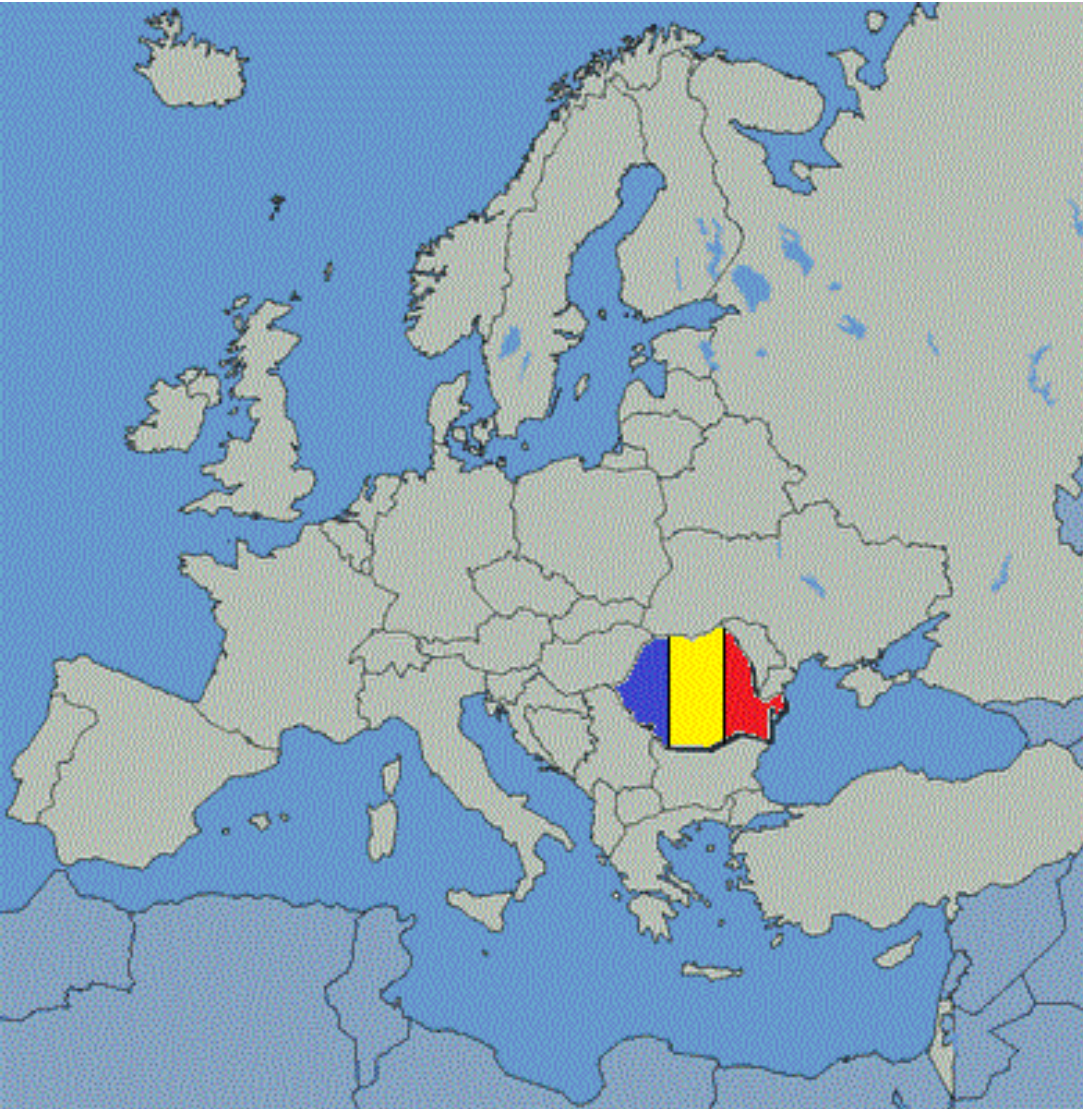
‘Partnerships for smart investments in
Bucharest-Ilfov REGION’

*Liviu Râncioagă - Bucharest-Ilfov
Regional Development Agency
09.10.2014*

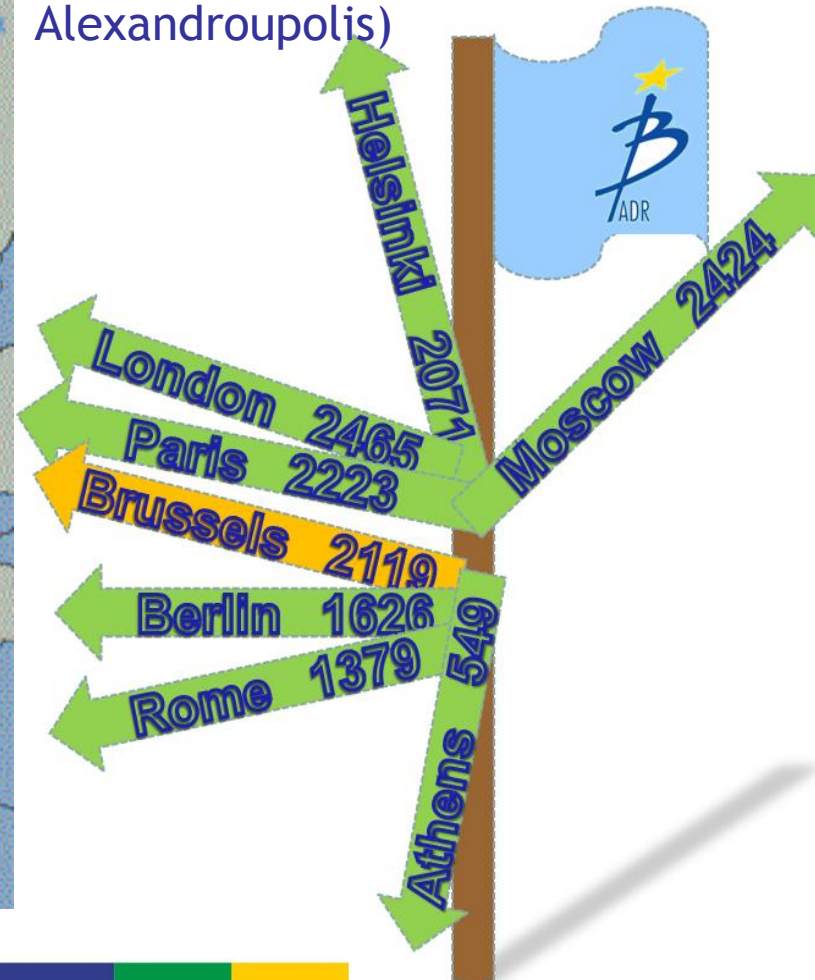


Inițiativă locală. Dezvoltare regională.

Discover Bucharest-Ilfov Region !



- In the middle of the continent:
At the intercrossing of two Pan-European corridors: IV (Dresden-Istanbul) and IX (Helsinki-Alexandroupolis)



Discover Bucharest-Ilfov Region !



- One of the 273 EU NUTS 2 regions, one of 28 Capital regions, **the richest** in Eastern part of the EU (Gross domestic product per capita in purchasing power standards)

	BI Region	Bucharest	Ilfov	% of BI Region in Romania
Area	1 821 km ²	13.1%	86.9%	0.76
Population	2 272 163 inh.	82.89%	17.11%	11.29



Discover Bucharest-Ilfov Region !

- Bucharest Henri Coanda and Bucharest Baneasa Aurel Vlaicu International Airports

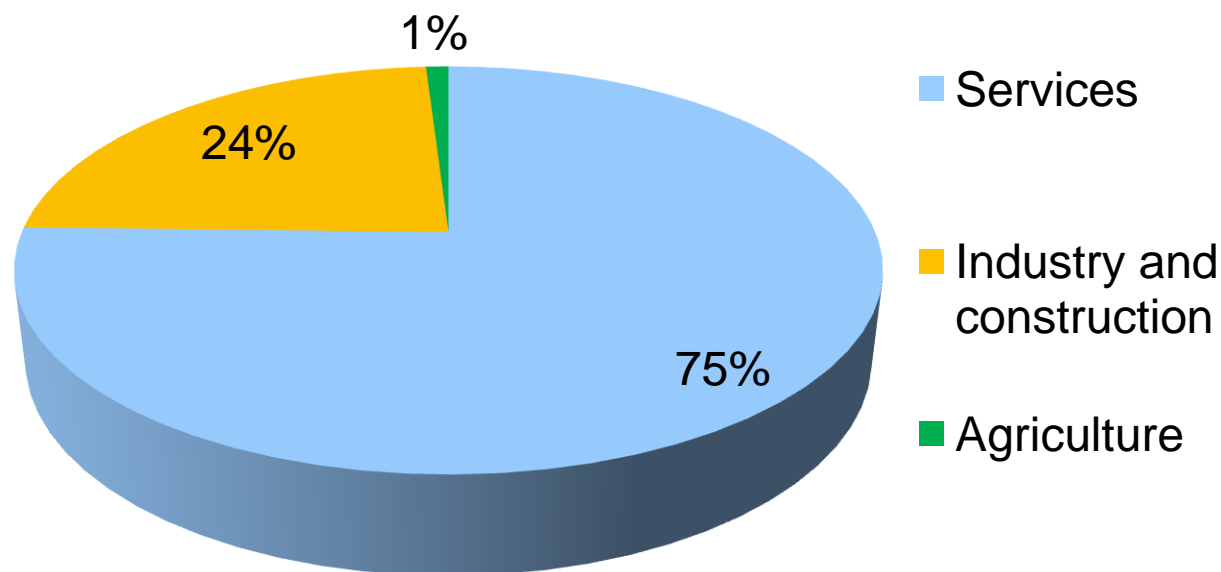


Unirii Boulevard - Palace of Parliament
Bucharest



Structure of the BI economy (INS, 2013)

Structure of the BI economy



Services: from 53,1% in 1995 to 75% in 2005-2013

Investment Opportunities for Your Business in Bucharest-Ilfov Region - *Services sector*

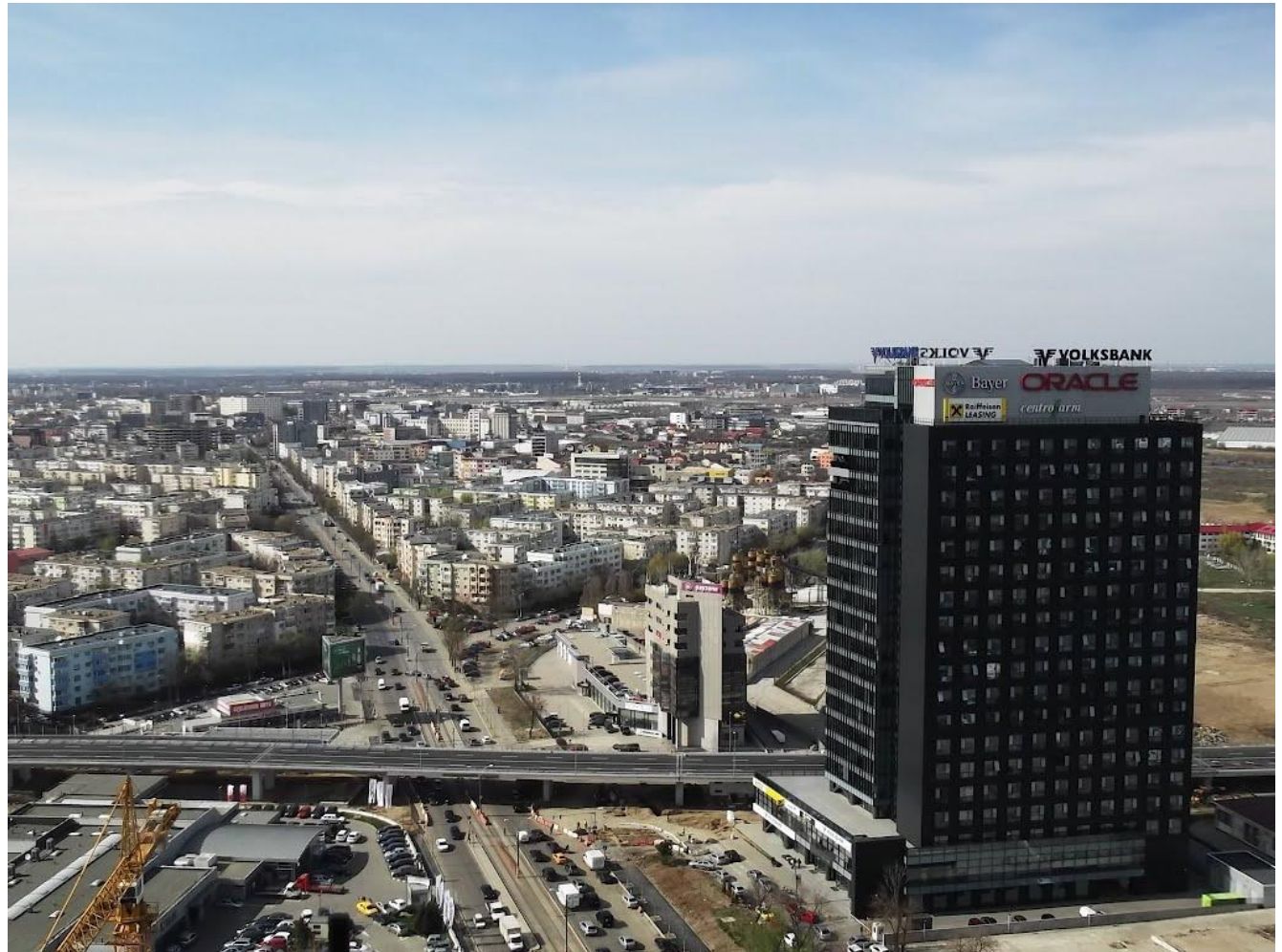
- ✓ Telecommunications, financial intermediation, banking, education and research sectors, transport and storage, business services and trade - activities in retail and wholesale
- ✓ R&D&I: BI Region represents the center of innovation and research in Romania: 22,74% of the innovative active companies in Romania.



Siriului Business Centre, Bucharest, REGIO beneficiary

Investment Opportunities for Your Business in Bucharest-Ilfov Region - *Services sector*

✓IT&C -
support
centers,
technological
parks,
assembling
facilities
included



Oracle Headquarters, Bucharest

Investment Opportunities for Your Business in Bucharest-Ilfov Region - *Services sector*

✓ **Tourism** - business, congress & exhibition, spa & wellness, museums, gardens and parks



Cernica Monastery, Ilfov County



Investment Opportunities for Your Business in Bucharest-Ilfov Region - *Services sector*

✓ **Tourism** - business, congress & exhibition, spa & wellness, museums, gardens and parks



Palace of the Parliament, National Museum of Contemporary Art, Bucharest

Investment Opportunities for Your Business in Bucharest-Ilfov Region - *Services sector*

✓Tourism - Day and night entertainment



Old center, Bucharest

Investment Opportunities for Your Business in Bucharest-Ilfov Region

✓ **Construction & real estate:**
industrial & retail structures, office spaces, business support centers, residential parks, entertainment centers & parks, especially in the North and West of Bucharest



Bucharest Basarab Overpass

Town Twinning of Bucharest Municipality

London, UK
Moscow, Russia
Athens, Greece
Atlanta, USA
Beijing, China
Budapesta, Hungary
Kishinev, Republic of Moldova
Hanovra, Germany
Montréal, Canada
Sofia, Bulgaria
Nicosia, Cyprus
Lagos, Nigeria
São Paulo, Brazil
Paris, France



Companies on the market



Conclusions

Let's keep in mind that the *Cohesion Policy* asks for continuous cooperation for the development of networks and action plans in order to finance sustainable projects, supporting synergies in the regional development initiatives



BUCHAREST-ILFOV REGIONAL DEVELOPMENT AGENCY

Intermediary Body for Regional Operation Programme

163 M. Eminescu Street, Bucharest, Romania

Phone /Fax: +4 021.315.96.59; +4021.315.96.65

Phone helpdesk: + 4021.313.80.99

Email: contact@adrbi.ro; liviu.rancioaga@adrbi.ro

www.adrbi.ro

www.regioadrbi.ro



Inițiativă locală. Dezvoltare regională.

